



JOHNSTON Historical SOCIETY

(Station) ^^ PO BOX 109, Johnston, IA 50131-0109

Pres Bob Otto
Secy-Trea Ray Schliebs

NEWSLETTER

Vol II

No. 1

Published monthly

Aug 1995

TIME & 4:00 P.M. September 27, 1995
PLACE Crown Point Conference Room, off Pioneer Parkway.
PROGRAM Melinda Howard, Youth Coordinator of the Altoona YWCA will speak about the Living History Club she has started for 3rd and 4th graders.

CEMETERIES

Loren Horton program on cemeteries at the last meeting was a slide show and talk on what to look for in cemeteries. Several brochures are available concerning his subject matter. Several other local history societies were invited and sent representatives. Refreshments were furnished by our people.

If you want to see the material, contact any of your officers or this editor.

NOTICE

Committee chairs should draw a definition of the purpose of their respective committee and they should give the president a written summary of the goals they want to attain.

GENEALOGICAL NUMBERING SYSTEMS (continued)

The pedigree numbering system was described in Vol. I, No. 12 of this Newsletter. There is less universal usage and agreement on how to number people in a genealogy, which lists the descendants of a common ancestor, than there is on numbering pedigrees.

We will not explain the European practice because of its length of numbers which include roman numerals along with arabic letters and numerals.

Numbering Compiled Genealogies

There are two generally used systems in America; one is called the *Register* or *New England* system, for the *New England Historical and Genealogical Register*, the other a modification of it called the *Record* system for the *New York Genealogical and Biographical Record*. The two publications pioneered their use.

In both systems the members of each generation are listed eldest branch first, and the numbering of each generation is completed before the next one is begun. Children of an individual are listed under that person(with an indication of the appropriate spouse). and are given a birth-order number in lower-case Roman numerals- i, ii, iii, iv, etc.

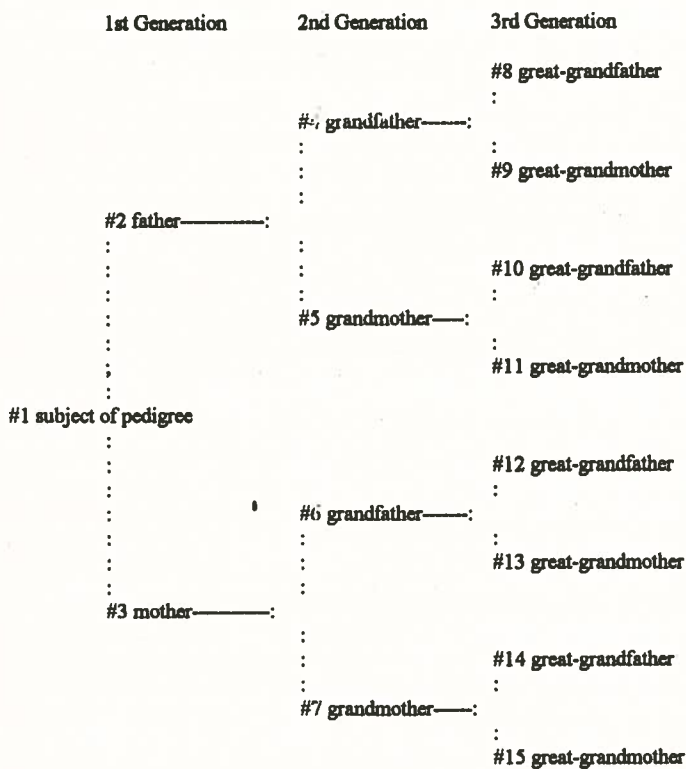
In the *Register* system, Arabic numerals (1,2,3,etc.) are given starting with 1 for the common ancestor, to each person whose line will be carried on and discussed under the following generation This number precedes the small Roman numeral for birth-order. Individuals whose lines are not continued are not given Arabic numerals. This system is also used in *The American Genealogist*.

The *Record* system sometimes called the *Modified Register* system assigns an Arabic numeral to each individual; that number precedes the birth-order Roman numeral in the list of children under each parent family. If a child's line is discussed further under the next generation, the Arabic number is prefixed by a "+". This system which is also used in the *National Genealogical Society Quarterly*, has the advantage of providing each individual with a unique number by which he can be referred to.(see Example C)

In the *Record* system, if the common ancestor #1 had five children, you would number them in order of their birth 2 thru 6. Next you number all the grandchildren, starting with eldest as #2, designating the eldest as #7. Then you would assign numbers to the great-grandchildren, using the next available consecutive number for the first child of #7.

Example A

**PEDIGREE NUMBERING
(Sosa-Stradonitz System)**



Example B

**COMPILED GENEALOGY NUMBERING
(Register System)**

1. Common ancestor
Children:
(by first wife)
 - 2 i First son (line continued in next generation)(by second wife)
 - ii Daughter (line not continued)
 - a. her first child
 - b. her second child
 - iii Second son, died s.p. (line not continued)
- 3 iv Third son (line continued)
 - v Second daughter, died unkn. (line not continued)

SECOND GENERATION

2. First son of #1, from above
Children:
 - 4 i First Son (line continued)
 - 5 ii Second son (line continued)
3. Third son of #1 from above
 - i Daughter of #3 (line not continued)
 - 6 ii First son of #3 (line continued)
 - 7 iii Second son of #3 (line continued)

THIRD GENERATION

4. First son of #2, from above
Children: (continued lines numbered starting with 8), etc.

Example C

**COMPILED GENEALOGY NUMBERING
(Record System)**

1. Common ancestor.
Children by 1st wife:
 - + 2 i First son (line continued in next generation)Children by 2nd wife:
 - 3 ii Daughter (line not continued)
 - a. i her first child
 - b. ii her second child
 - 4 iii Second son, died s.p. (line not continued)
- + 5 iv Third son (line continued)
- 6 v Second daughter, died unkn. (line not continued)

SECOND GENERATION

2. First son of #1
Children:
 - + 7 i First son of #2 (line continued)
 - + 8 ii Second son of #2 (line continued)
5. Third son of #1
 - 9 i Daughter of #5 (line not continued)
 - a. i her known child
 - +10 ii First son of #5 (line continued)
 - +11 iii Second son of #5 (line continued)

THIRD GENERATION

7. First son of #2.
Children: (all numbered in order of birth, starting with #12)
8. Second son of #2.
Children: (numbered in sequence after youngest child of #7)
10. First son of #5.
Children: (numbered in sequence after youngest child of #8)
11. Second son of #5.
Children: (numbered in sequence after youngest child of #10)

Members as of 9-21-95 (We solicit corrections)

Last Name	First Name	Initial	Co-Member	Committee	Cap.	Phone	Tyr
Allender	Madilyn	K	Harry L.			276 4339	F
Andrews	Tamara	R	Greg A.			986-2085	F
Aulich	H. Albert		Irene L.			276-7158	F
Beck	Ernest	A	Josephine M			276 5286	F
Bogaard	Judy		David	,Proj&Prog	Ch#1	515-986-3575	F
Broadie	Carroll	E	Lillie			276-0190	F
Dickinson	Carol	V	Donald			303 278 1357	F
Duvick	Selma		Donald	Nwsltr	Ch	515-276-2923	F
Eppich	Joanne		John				F
Friestad Jr.	Louis		Gay	Aud	Mem	276-2656	F
Gilbert	James		Jean			276-5162	F
Goss, Jr	David	A	Patricia			276-3308	F
Hansen	Jeanne		Merton	PR	Ch	276 5117	F
Heth	Karl	D				276-9631	F
Johnson	Robert		Shirley				F
Johnson	Mark	W	Mary			276-6803	F
Kinsey	Orval		Jeanne			515-276-5076	F
Kuefner	Herbert	H	Edith A			277 3515	F
Michael	Fern		Lloyd			515-279-5885	F
Miltenberger	Karen	R	Wm			715-489-3677	F
Mott	Richard	B.	Betty Jean			276 2968	F
Noble	Stephen	W	Patsy			278 1756	F
Orlich	Dushan		June	Aud	Ch	515-225-7813	F
Otto	Robert	C	Elizabeth			515-276-5304	F
Paez	Mary Jane		Alex	Prgm	Ch	515-278-1170	F
Rittgers	A.T.	Theodo	Flo			252-9806	F
Rittgers	Clarence		Mary			276-9308	F
Roberts	Mary	Ann	CharlesL	Bylaws	Ch&M	276-2926	F
Rong	William "Scott"		Dawn			1-402-421-3583	F
Schleihs	Raymond	C	Vivian	Fin &Nwsltr	Mem	515-276-0309	F
Simpson	Laverne	W	Shirley			986 3414	F
Tarltton	Rich		Beverly			993 3281	F
Temple	Lowell		Mildred	Aud	Mem	515-276-0005	F
Ver Hoef	John		Jan A.	Aud	Mem	278 9676	F
Wallerstedt	Patty		Kenneth	W & M	Mem	277-7824	F
Zarley	Donald	H	Marilyn J			288-3467	F
Zorn	Barbara		Steven	W&M	Ch	278-2808	F
Bettoney	Buelah					276 4368	S
Betz	Richard	W		W&M	Mem	515-276-7559	S
Betz	Virginia			Proj	Mem	992-4076	S
Betz	Raymond	S		W & M	Mem	270 2989	S
Bowen	Earl "Bud"	N				515 637 4458	S
Byers	William	E				1 619 697 1033	S
Carlson	Bessie			W&M,Acq	Ch #2	515-289-2050	S
Dougherty	Ruth						S
Kuefner	Gladys	H				276 4177	S
Matherly	Maribel					276 6293	S
Pennington	Margaret			W & M	Mem	515-279-5321	S
Plymat	Amy					986-4540	S
Schlenker	Raymond	M				278 5680	S
Sorenson	Melba					276-2618	S
Stillwell	Emma	Jean				276 1446	S
Thomas	Robert					277 3882	S
Van Dyke	Myrtle					276-9260	S
Vignovich	Droga					276-2647	S
Voorhees	Roselyn					805 967 6089	S
Wakefield	DeLores	P				276-3668	S